

# Instructions

## VZL 2, VZL 3, VZL 4



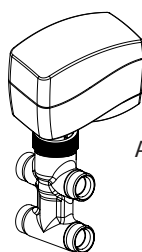
VZL 2



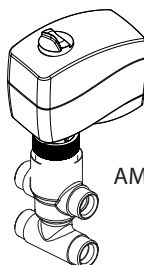
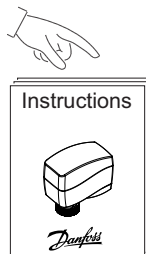
VZL 3



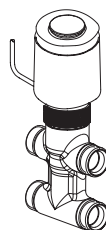
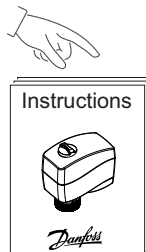
VZL 4



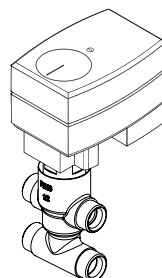
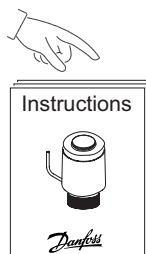
AMV(E) 130, 140



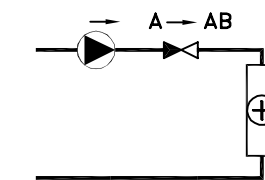
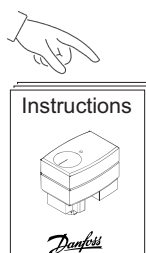
AMV(E) 130H, 140H



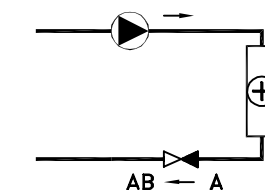
TWA-Z



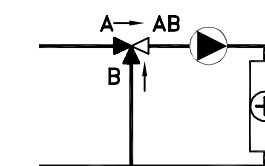
AMV(E) 13 SU



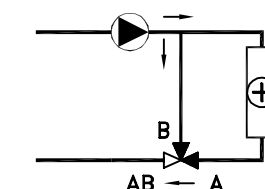
VZL 2



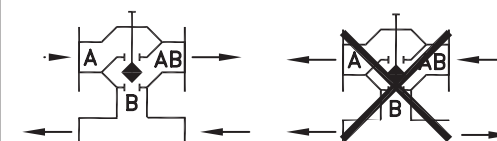
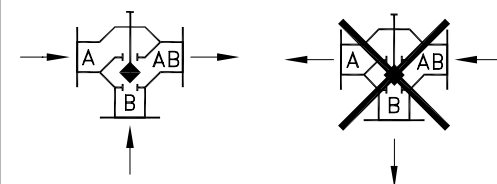
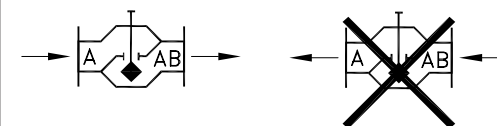
VZL 2



VZL 3/VZL 4



VZL 3/VZL 4

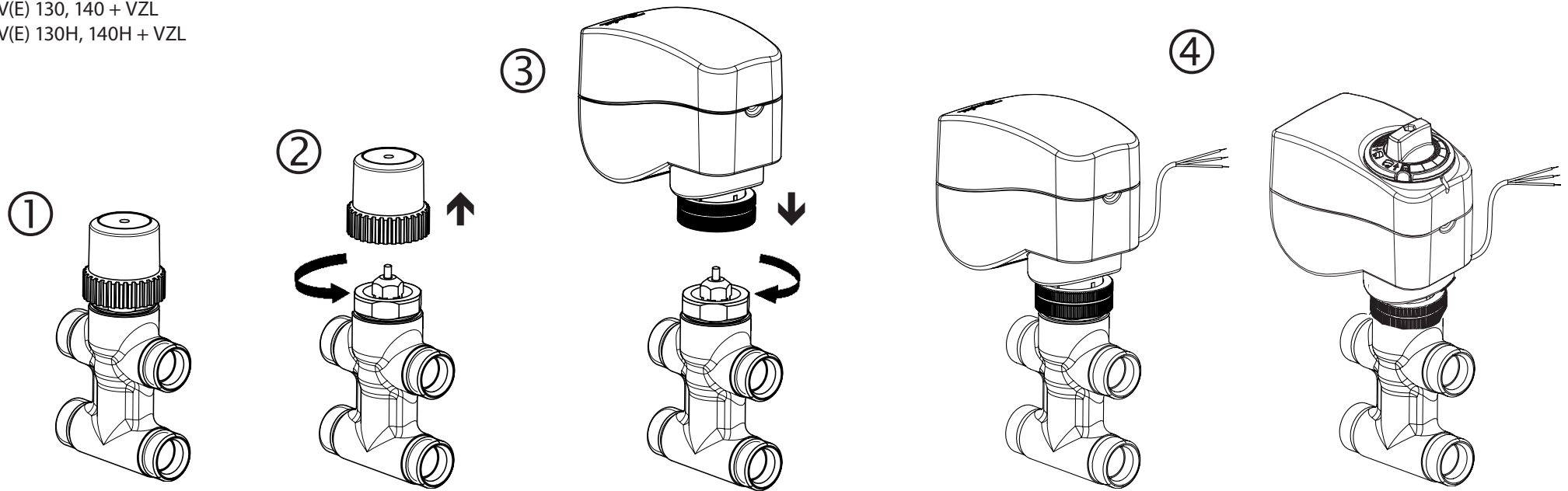


max. t: 120°C  
min. t: 2°C

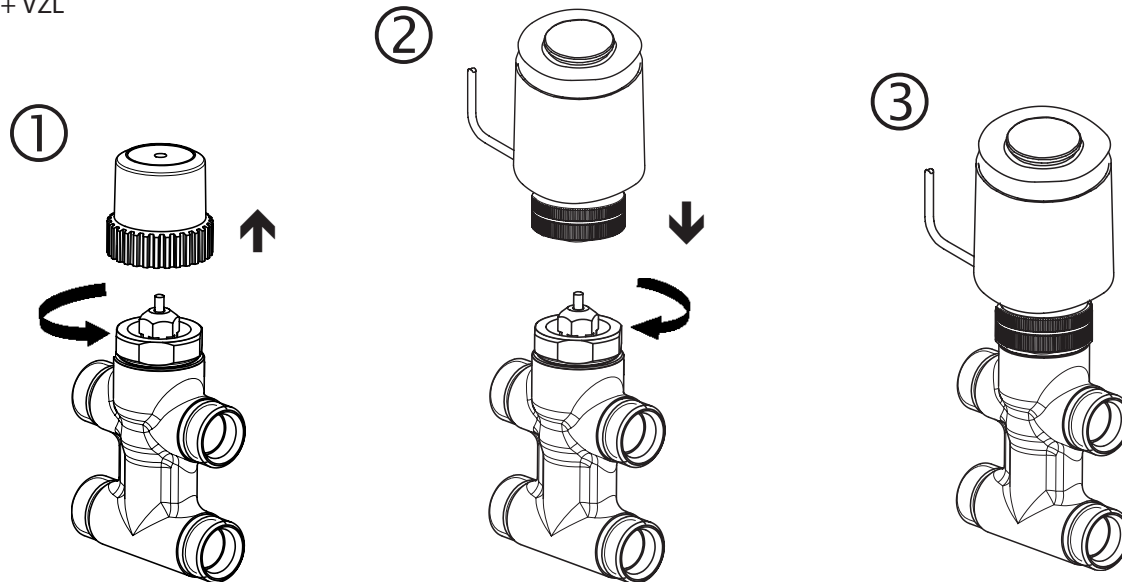
max. P: 16bar

16 bar = 1600 kPa = 232 psi

AMV(E) 130, 140 + VZL  
AMV(E) 130H, 140H + VZL



TWA-Z + VZL



AMV(E) 13 SU + VZL

